



# **COVID-19** **Vaccination** **Plan**



# Together in service of our community

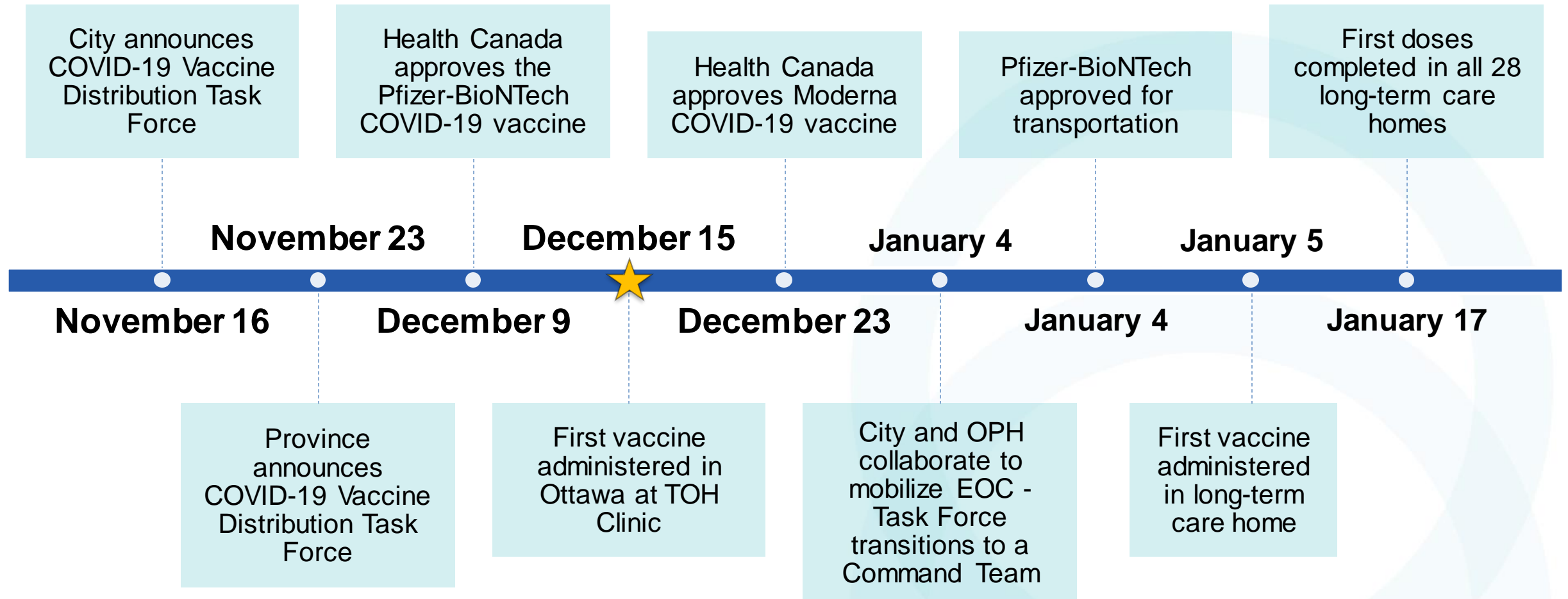
## One City, One Team

- City of Ottawa
- Ottawa Public Health
- The Ottawa Hospital
- Montfort Hospital
- Queensway Carleton Hospital
- CHEO
- Long-term care and retirement home administrators
- Indigenous health service providers
- Community members at higher risk
- Ontario Health
- Amongst many others!





# Vaccine Rollout



# Framework



| Federal Government   | Province of Ontario  | Ottawa   |
|--|--|--|
| <ul style="list-style-type: none"><li>• Vaccine approvals</li><li>• Purchasing</li><li>• Distribution to Provinces and Territories</li></ul> | <ul style="list-style-type: none"><li>• Receive vaccine from Government of Canada</li><li>• Ethical framework for prioritization groups</li><li>• Distribution to cities/regions</li></ul> | <ul style="list-style-type: none"><li>• Receive vaccine from Province of Ontario</li><li>• Vaccine sequencing based on provincial rollout and ethical framework</li><li>• Administer vaccines based on supply availability</li></ul> |

# Goal

Provide a **COVID-19 vaccine** to all eligible Ottawa residents who want one



# Concept of Operations

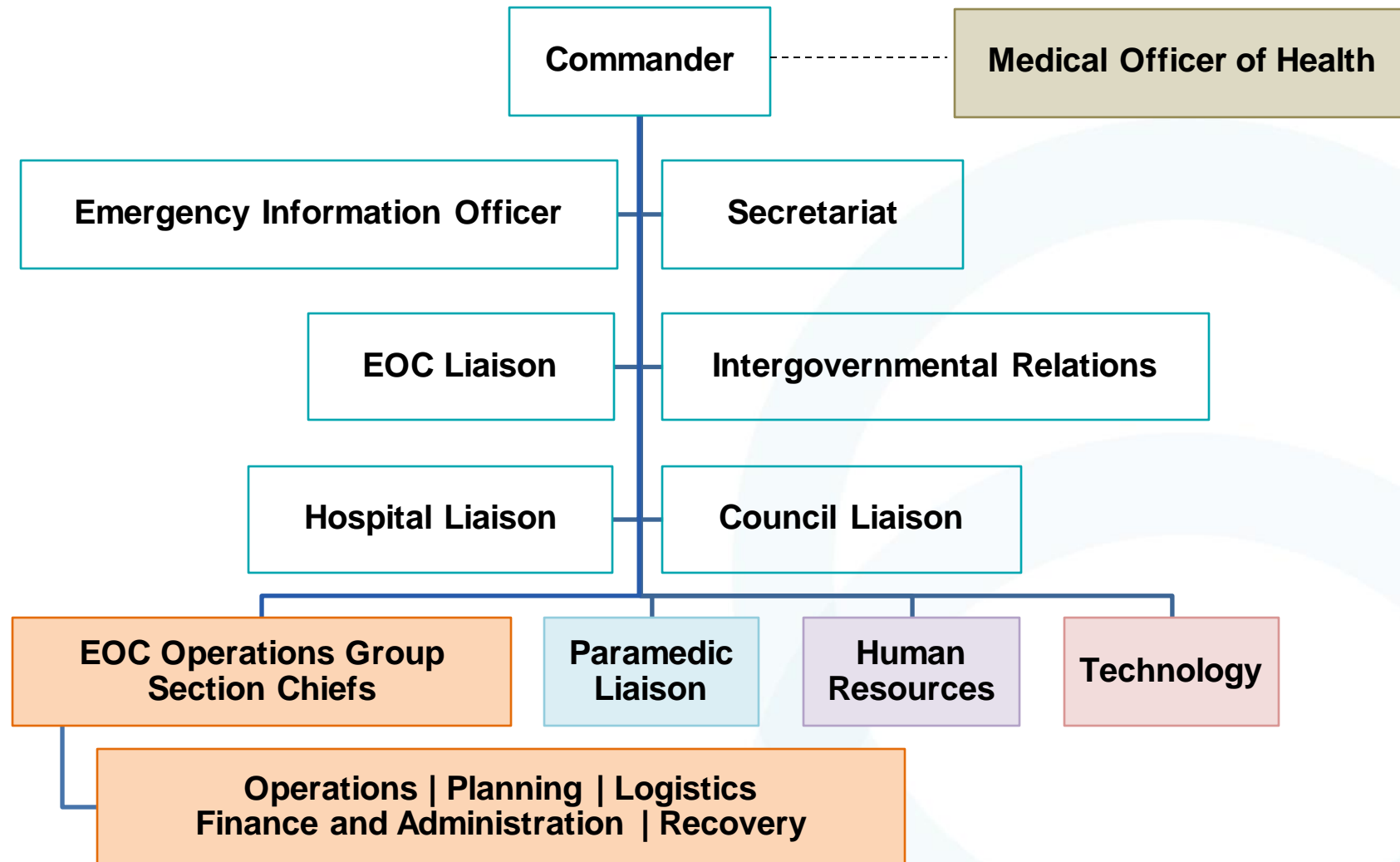


**Emergency Operations Centre Control Group**  
[Strategy and Policy Direction]

**Emergency Operations Centre - Command Team\***  
[Consequence management and continuity of city-wide operations]  
\*Previously COVID-19 Vaccine Distribution Task Force

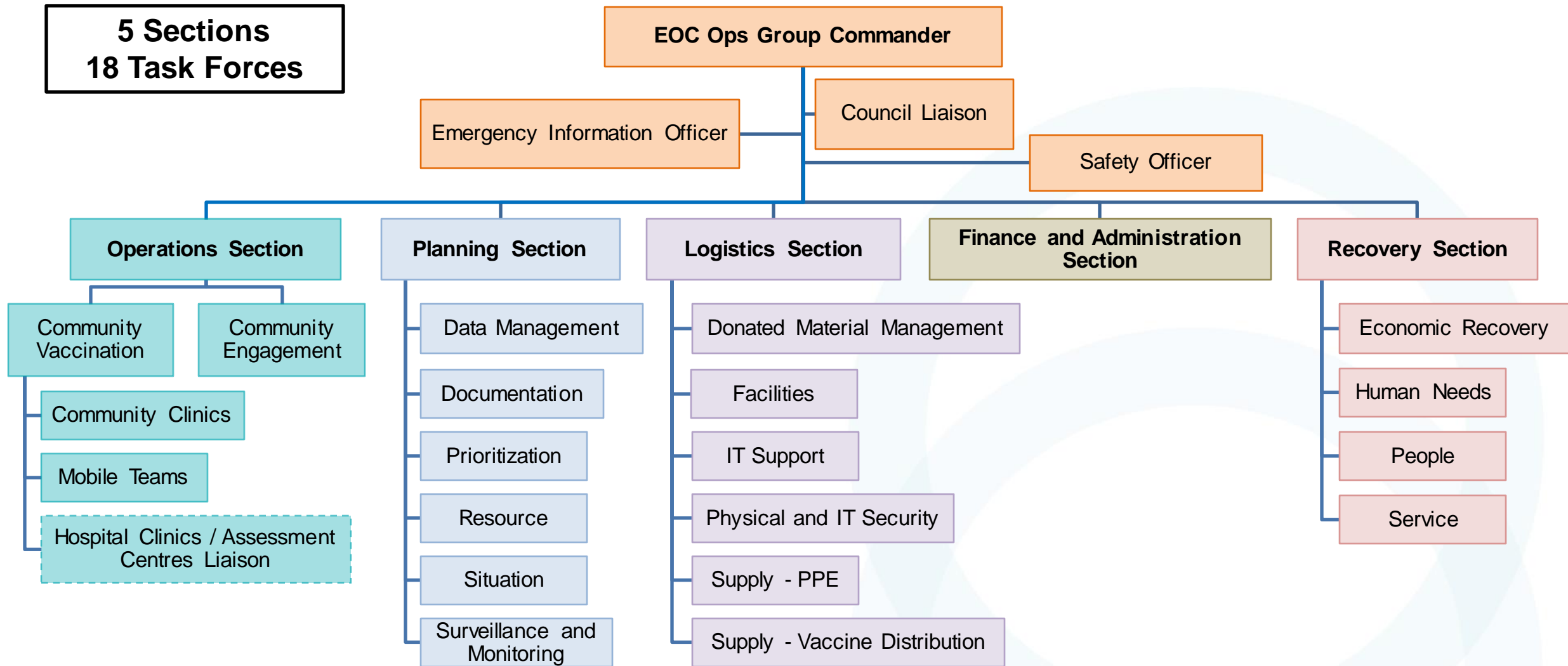
**Emergency Operations Centre – Operations Group**  
[Respond and manage operational needs of the service areas]

# EOC Command Team



# EOC Operations Group

**5 Sections  
18 Task Forces**





# Provincial Phases / Population Groups

## Phase 1

**In progress  
(started Dec 15)**

Limited doses of the vaccine available to:

- Residents, staff, essential caregivers of congregate living settings that provide care for seniors
- Health care workers
- Adults in First Nations, Metis and Inuit populations
- Adult chronic home care recipients

## Phase 2

**March – July  
(pending supply)**

Increasing stock of vaccines, available to:

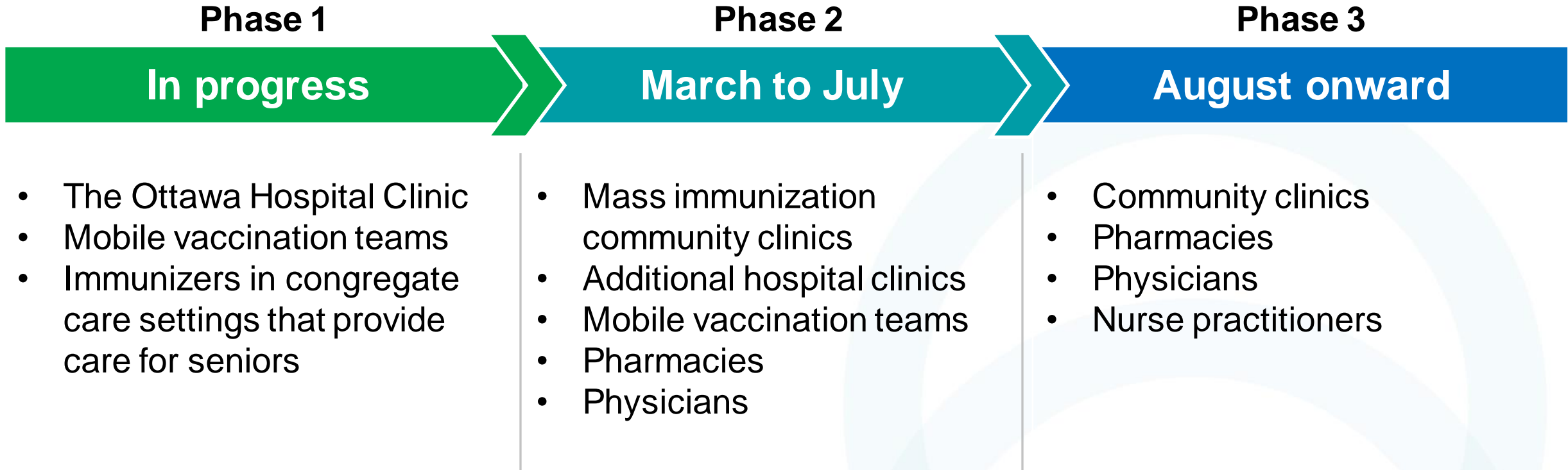
- Older adults beginning with those > 80 years old
- High risk congregate settings (i.e., shelters)
- Essential workers – beginning with front-line essential workers
- People with high-risk chronic health conditions and their caregivers
- Other high-risk populations

## Phase 3

**August onward  
(pending supply)**

Vaccines available widely across Ontario for anyone who wants to be immunized

# Readiness



Ottawa plan is **scalable** to meet supply and demand



# The Ottawa **vaccination** plan



# Mobile Vaccination Teams

| Sites that have their own immunizers   | Sites that require EOC immunizer support  |   |
|--|---|---|
| <ul style="list-style-type: none"><li>• Public health nurse</li><li>• Pharmacist</li><li>• Data clerks</li><li>• Immunizers on site (i.e. LTCH nurses)</li></ul> | <ul style="list-style-type: none"><li>• Paramedic Mobile Team that dilutes, immunizes and monitors for adverse events</li><li>• Public health nurse</li><li>• Data clerks</li></ul> | <ul style="list-style-type: none"><li>• Public health nurse</li><li>• Pharmacist</li><li>• Data clerks</li><li>• Other immunizers (i.e., Inner City Health)</li></ul> |



- ❖ Number of resources vary based on site (i.e., number of residents, staff, etc.)
- ❖ Deployed to hard-to-reach areas (i.e., rural areas)

# Vaccinations at long-term care homes



## Pre-Arrival

- LTCH/RH Administrators (consent forms)
- Site reconnaissance (safety measures in place)



## Transport Vaccine



## Arrival

- Vaccine preparation
- Immunizations
- Monitoring for adverse events



## Post

- Documentation



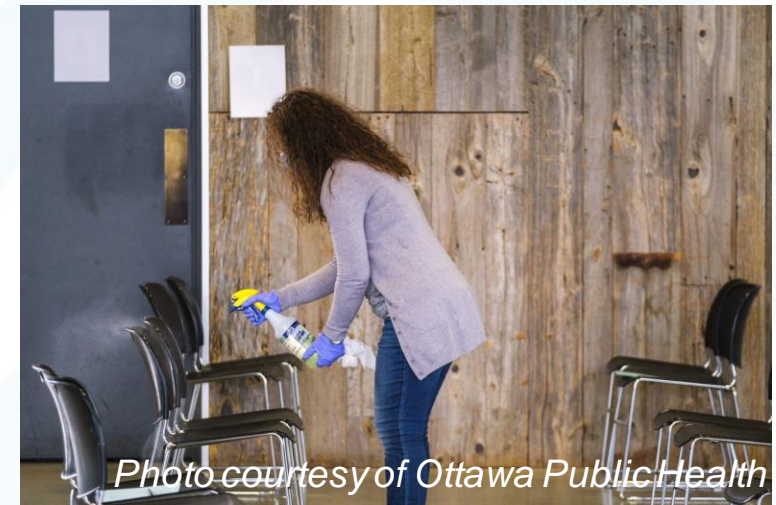
# 2020/2021 flu clinics

## Feedback from OPH community clinics

- 92% had an overall "excellent" experience
- 98% rated booking system as "excellent", "very good" or "good"
- Extremely positive experience with staff
- 97% happy with clinic locations

## Takeaways for COVID-19 vaccine clinics

- Partnership with primary care providers
- Online booking system
- Staffing requirements
- Clinic layout and flow
- Availability (7 days/week, extended hours)
- IPAC and COVID measures



# Community Vaccination Clinics

1. **Horticulture Building,**  
1525 Princess Patricia Way
2. **Eva James Memorial Centre,**  
65 Stonehaven Drive
3. **Peter D. Clark Place,**  
255 Centrum Boulevard
4. **Nepean Sportsplex (Halls A and B),**  
1701 Woodroffe Avenue

## Based on Flu Clinic model

- ~1,200 people per day at each site
- 3 additional sites will also be identified for Phase 2



*Photo courtesy of Ottawa Public Health*

# Tried and tested vaccine clinic model

- Tested and established floor plan based on successful flu vaccine clinics
- Clinic layout workflow
  1. Pre-screening area
  2. Check-in area
  3. Pre-vaccine waiting room
  4. Vaccination point/room
  5. Post-vaccine waiting room
  6. Check-out area



*Photo courtesy of Ottawa Public Health*



# Logistical considerations – People

- Staff scheduling, training and testing (mobile teams must have a recent negative COVID-19 test)
- Client bookings
- Managing vaccine supply and tracking patient information
  - Second dose several weeks later (with same vaccine as first dose)
- Traffic and parking for Community Vaccination Clinics and Hospital Clinics



*Photo courtesy of Ottawa Public Health*

# Logistical considerations – Assets

- Transportation of vaccine
- Supplies
- Clinic technology and data management
- Vaccine cold storage, handling and distribution
- Security
- Vaccine inventory management



*Photo courtesy of Ottawa Public Health*



# Vaccine sequencing

- OPH follows the Province's Ethical Framework for COVID-19 Vaccine Distribution
  - Evaluates risk of exposure, severe disease or outcomes and health system capacity
  - Minimizes harms and maximizes benefits
  - Ensures equitable distribution, promotes fairness, transparency and legitimacy
- Complimented by Vaccine Sequence Strategy Task Force at the local level
- **Bottom line:** All Ottawa residents who want the COVID-19 vaccine will have access to it

# Vaccine Sequence Strategy Task Force

- Co-led by OPH and LHIN and informed by members of groups disproportionately impacted by COVID-19
- Promotes equity, accountability and public trust
- Makes recommendations on the sequencing of vaccines in line with Provincial guidance
- Outlines barriers to access

# OPH Daily COVID-19 Dashboard



## Vaccination

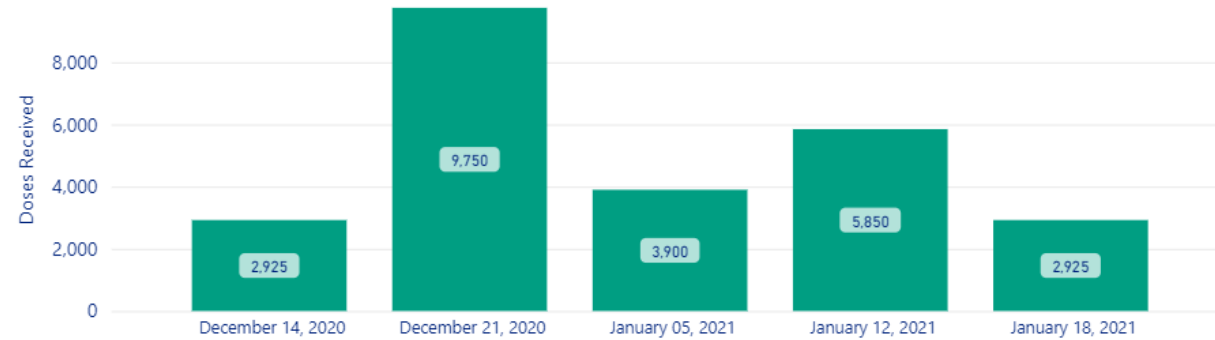
23,883

Doses Administered

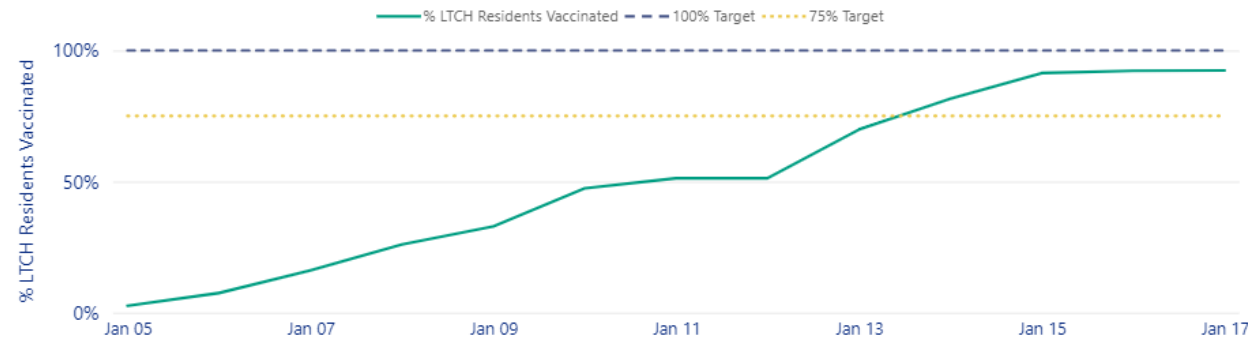
25,350

Doses Received

COVID-19 Vaccine Doses Received



First Dose Administered to LTCH Residents



# Adverse Events Following Immunization (AEFIs)

- Unwanted or unexpected health effect after someone receives a vaccine
- Health care providers are required by law to report AEFIs
- OPH investigates all local reports and enters information into the Provincial tracking system

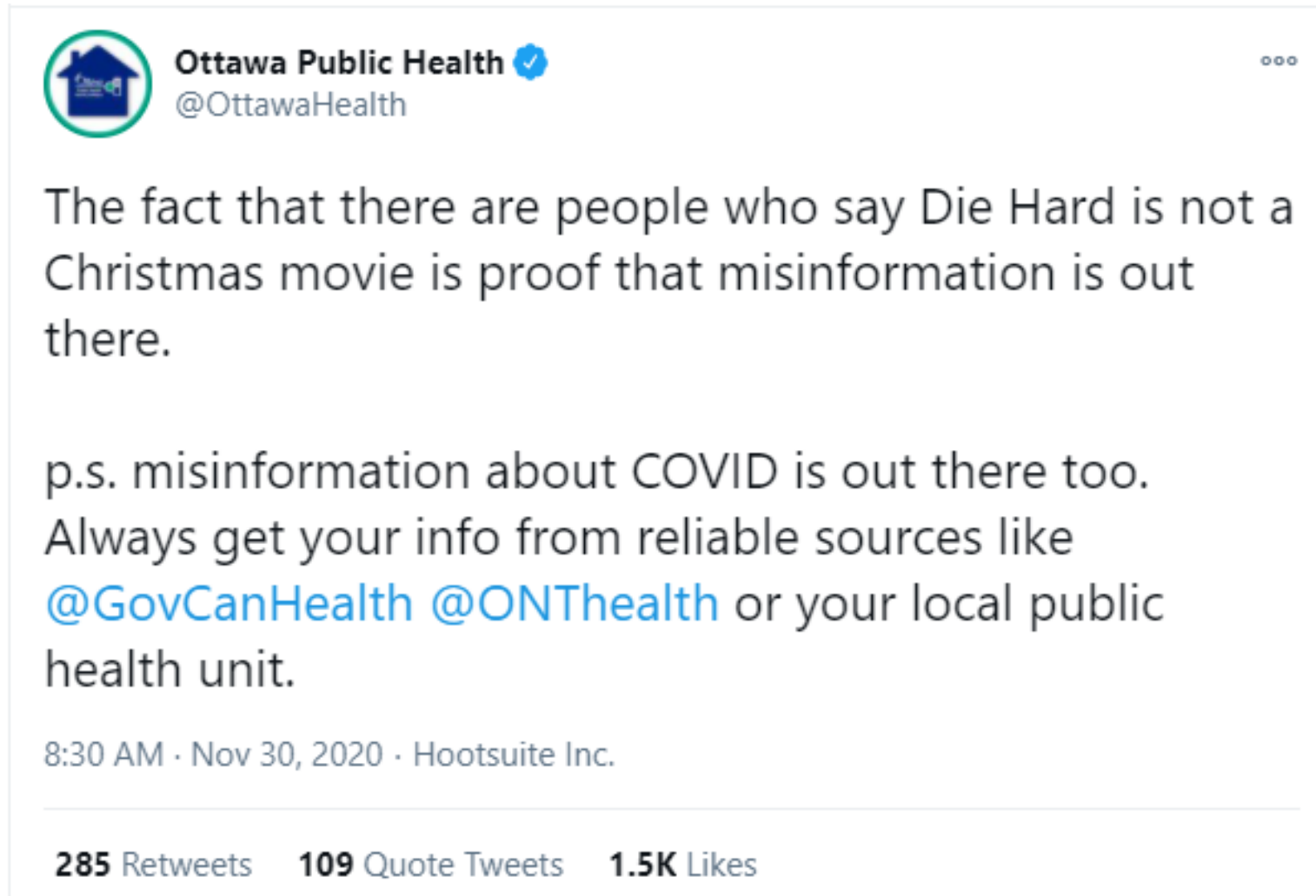
# Addressing vaccine hesitancy

- Misinformation, disinformation and scams
- **Webpages:**
  - [OttawaPublicHealth.ca/COVID19Vaccine](https://OttawaPublicHealth.ca/COVID19Vaccine)
  - [OttawaPublicHealth.ca/VaccinesWork](https://OttawaPublicHealth.ca/VaccinesWork)
  - [OttawaPublicHealth.ca/Misinformation](https://OttawaPublicHealth.ca/Misinformation)
- **Social media:**
  - [Myth vs fact campaign](#)
  - "[COVID Decoded](#)" video series
  - Parenting in Ottawa
- Education and community engagement

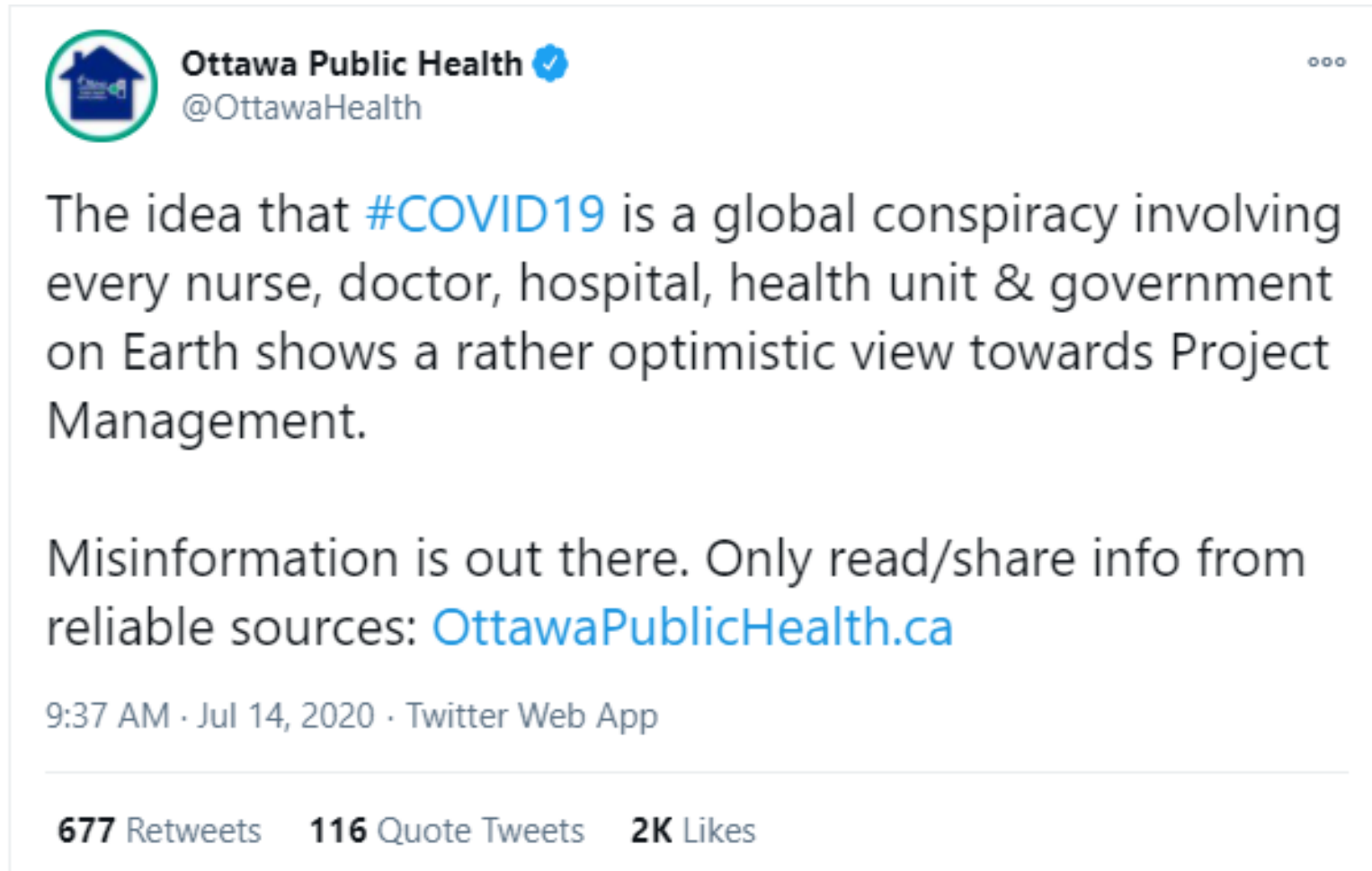




# Addressing vaccine hesitancy through social media



# Addressing vaccine hesitancy through social media



# Addressing vaccine hesitancy through social media



**Ottawa Public Health** ✓

@OttawaHealth

Roses are red,  
Violets are blue,  
Poetry is hard,  
Vaccines work.

[ParentingInOttawa.ca/VaccinesWork](https://parentinginottawa.ca/VaccinesWork)

8:16 AM · Nov 27, 2020 · Twitter Web App

**366** Retweets   **83** Quote Tweets   **2.1K** Likes

# Community engagement

## Goals:

- Inform the vaccination plan
- Encourage and support populations at highest risk
- Share culturally appropriate and accessible information with diverse populations
- Engage with communities through existing networks

# Community engagement: Priority populations

- Long-term care and retirement home residents, staff and essential caregivers
- Congregate care settings (e.g., homeless shelters, group homes for people with disabilities)
- First Nations, Metis, and Inuit adults
- Older adults, including those receiving home care services
- Priority neighbourhoods, racialized populations, newcomers, diverse groups
- People with disabilities
- Rural residents



# We want to hear from you!

## Phase 5 of engagement: Vaccines

- How are you feeling about the new COVID-19 vaccines?
- Do you plan on getting a COVID-19 vaccine once it is available to you?
- Who do you talk to or get advice from when it comes to COVID-19 vaccines? What types of things come up in these conversations?
- Please share any challenges that may prevent you or your family from getting vaccinated for COVID-19

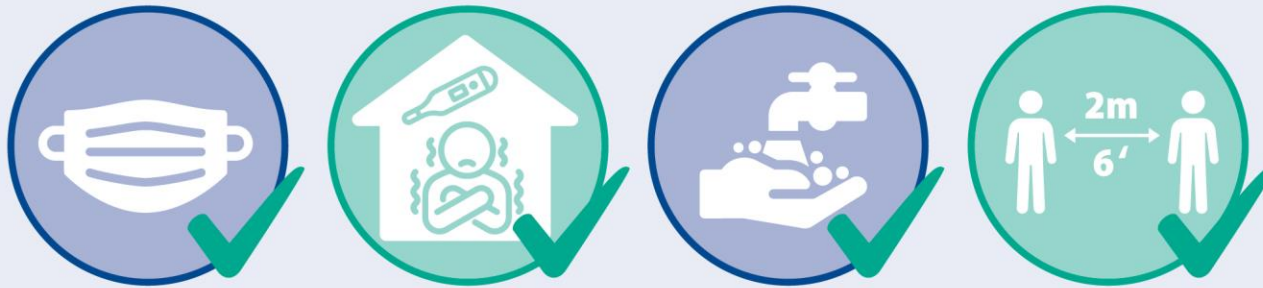


[engage.ottawa.ca/COVID19](https://engage.ottawa.ca/COVID19)

# What we can do now

## **COVID Wise Together**

[OttawaPublicHealth.ca/COVIDWiseTogether](https://OttawaPublicHealth.ca/COVIDWiseTogether)



## **COVID avisés ensemble**

[SantePubliqueOttawa.ca/COVIDAviserEnsemble](https://SantePubliqueOttawa.ca/COVIDAviserEnsemble)

# Next steps

- Continue administering vaccine received in Ottawa
  - Administering second doses in long-term care homes
  - First doses to retirement homes, congregate care settings and health workers at highest risk
  - Indigenous populations, chronic home care recipients
- The City is ready to administer more vaccines as soon as supplies allow, but it will be several months before the vaccine is available to the general public

# Key achievements – Recap

- The City's new EOC structure for 2021 has been stood up
  - ✓ 4 community clinics are ready to open subject to vaccine availability
  - ✓ Contingency freezers and other supplies have been ordered and received
  - ✓ Transportation of vaccine from City's storage and packing site is in place (for when Moderna arrives)
- 25,350 doses of the Pfizer-BioNTech vaccine have been received and 23,883 doses have been administered
- First dose has been made available to all 28 long-term care homes (20 by Ottawa's mobile vaccination teams)
- **More than 92 per cent** of all long-term care home residents have received first dose (97 per cent at City facilities)
- One high-risk retirement home and one congregate care home with older adults have also been provided the opportunity to receive their first doses

# Council Engagement

- Memos to the Mayor and Councillors
- **OPH COVID-19 Daily Dashboard:** Vaccine data updated three times per week
- Regular updates that will include FAQs to assist with resident inquiries
- Council Liaison and Command Team continue to assist Councillors with resident inquiries

# Stay informed



ottawa.ca  
OttawaPublicHealth.ca



/cityofottawa  
/OttawaHealth



@ottawacity  
@OttawaHealth



@cityofottawa  
@OttawaHealthSante



City of Ottawa  
Ottawa Public Health



@thelinkottawa